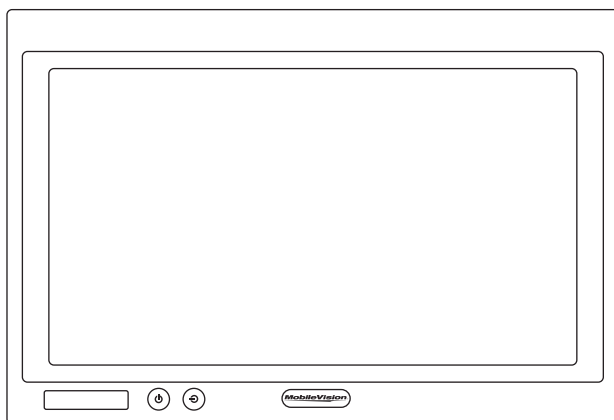


***MobileVision***™

# Owner's/Installation Manual



## 7" Color LCD Monitor

**Model: M115C**

For Technical Assistance, please call (800) 638-3600,  
or visit [www.magnadyne.com](http://www.magnadyne.com)

## Table of Contents

Introduction .....	2
Warning / Caution .....	2
Monitor Features and Controls .....	3
Remote Control Functions .....	3
General Operation .....	4-5
Technical Specifications .....	5
Wiring Diagram .....	6
Installation Instructions .....	6-7
Warranty .....	8

## Introduction

Congratulations on the purchase of a quality MobileVision 7" LCD Monitor. This system has been designed to provide years of trouble free operation.

The information enclosed provides a quick reference of the operations and maintenance of the new monitor.

This product must be installed and used in accordance with this manual. Any alterations to this product that enables it to be used in any way other than intended or designed could distract the driver and result in an accident causing injury or death. Magnadyne Corporation disclaims any and all liability that may result from failure to install and operate in any other manner in which this was intended.

## Warning

### Backing Up Your Vehicle

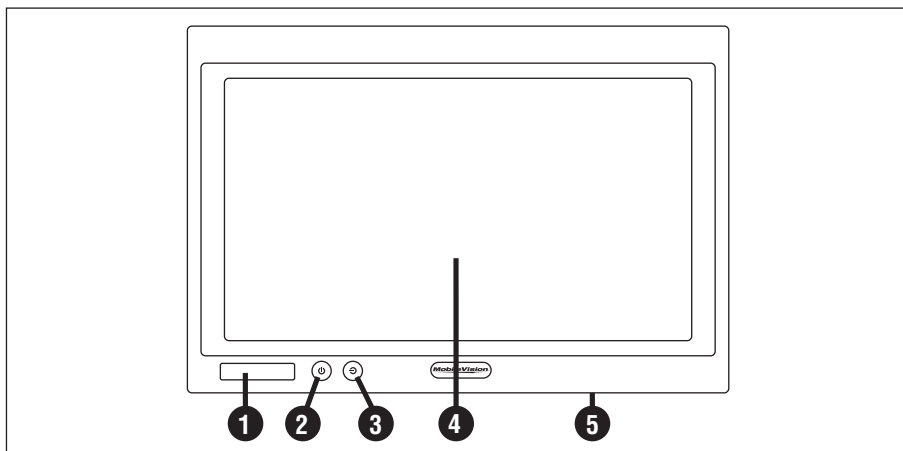
Do not backup your vehicle while looking at the monitor. Always look in the direction of your vehicle's motion. Use the monitor only as an aid in safety confirmation. The actual distance may be different than it appears in the monitor. The range of the image in the monitor is limited. Always be aware that blind spots may exist and not appear at all times on your monitor.

The product is intended to assist in safe driving and allows the driver to have a broader field of vision during backup. You, as the driver, are solely responsible for the safe operation of your vehicle and the safety of your passengers and pedestrians, and for abiding of all state and local traffic regulations. Do not use any features of this system to the extent it distracts you from safe driving. Your first priority while driving should always be the safe operation of your vehicle. MobileVision will not accept any responsibility whatsoever for accidents and/or injuries resulting from failure to observe these precautions or safety instructions.

## Caution

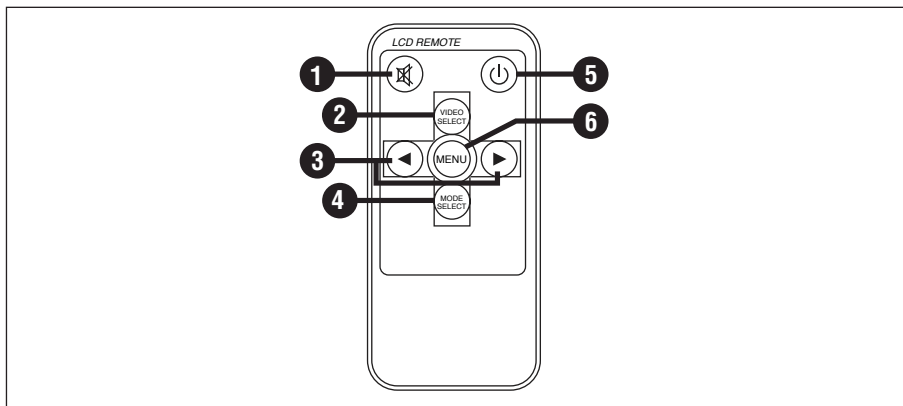
- FCC REGULATIONS STATE THAT ANY UNAUTHORIZED CHANGES OR MODIFICATIONS TO THIS EQUIPMENT MAY VOID THE USER'S AUTHORITY TO OPERATE IT.
- TO REDUCE THE RISK OF FIRE OR ELECTRIC SHOCK, DO NOT EXPOSE THIS EQUIPMENT TO RAIN OR MOISTURE.
- THIS DEVICE IS INTENDED FOR CONTINUOUS OPERATION.
- TO REDUCE THE RISK OF FIRE OR ELECTRIC SHOCK AND ANNOYING INTERFERENCE, USE ONLY THE RECOMMENDED ACCESSORIES.

## Monitor Features and Controls



- 1. IR Sensor:** Receives signal from the remote control.
- 2. Power Button:** Press this button to turn the unit "On" or "Off".  
**Note:** The ignition key must be in the "On" position.
- 3. Video Select Button:** Press to select a video source Aux 1 (RCA Input) and Aux 2 (Camera Input).
- 4. LCD Screen**
- 5. Rear Mounted Speaker:** The speaker is automatically activated.

## Remote Control Functions

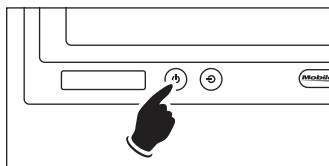


- 1. Mute:** Push to "Mute" the speaker.
- 2. Video Select Button:** Press to select a video source Aux 1 (RCA Input) and Aux 2 (Camera Input).
- 3. ◀ or ▶ Buttons:** Press these buttons to adjust the speaker's volume or adjust the selected menu function.
- 4. Mode Select Button:** Press to change the monitor's display ratio.
- 5. Power:** Press this button to turn the unit "On" or "Off".
- 6. MENU:** Press this button to select the desired menu function.

## General Operation

### Turning the Monitor On:

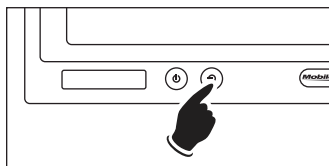
The monitor is operational by activating the ignition key then manually pressing the power switch on the unit.



### Selecting the Input Source

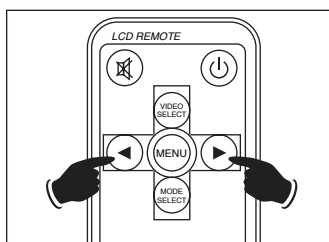
Press to select a video source Aux 1 (RCA Input) and Aux 2 (Camera Input).

**Note:** When the vehicle is put into reverse the camera image will automatically override the video source image.



### Adjusting the Speaker Volume

Press the ◀ or ▶ button on the remote to adjust the volume level of the rear speaker.

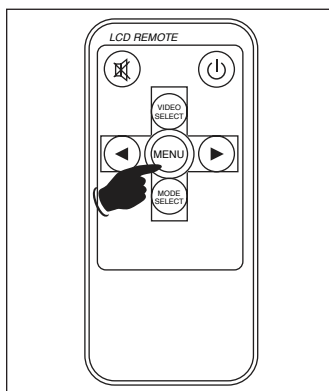


### Monitor Adjustment

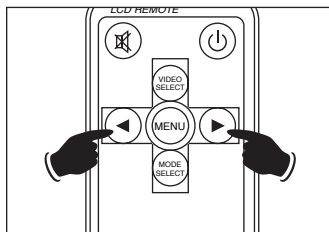
To access the monitor adjustments features, press the remote's **Menu** button.

Menu functions:

- Brightness
- Contrast
- Hue
- Saturation
- Display Ratio
- Language
- Mode
- Auto Power Down
- Reset
- Exit



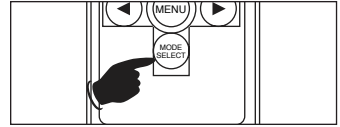
To adjust the selected menu function, press ◀ or ▶ button on the remote. After adjustment has been made wait 6 seconds and the pop-up menu will disappear.



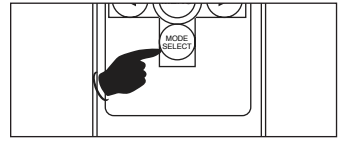
## General Operation

### Mode Adjustment

To access the monitor display ratio menu, press the remote's **MODE SELECT** button.



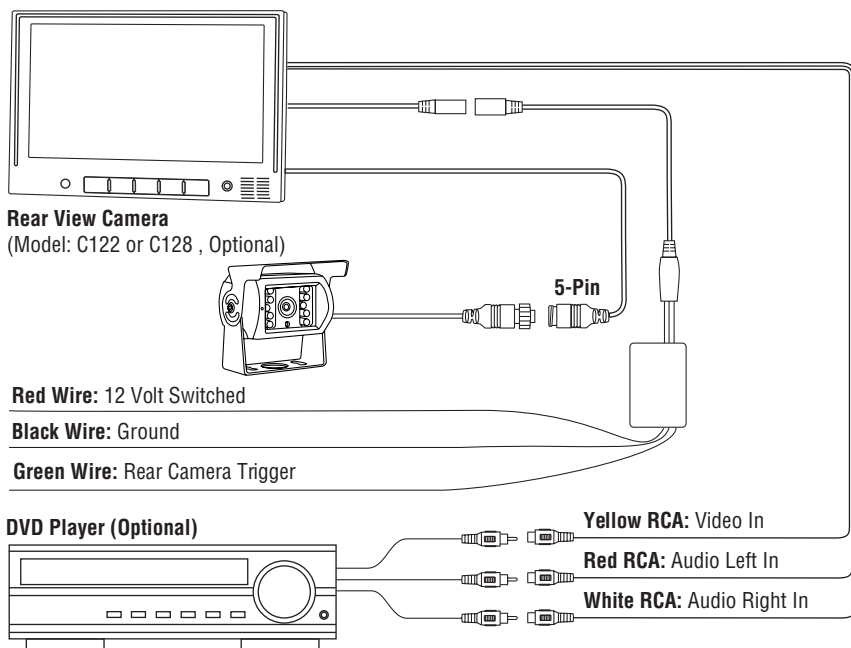
To adjust the display ratio, press the **MODE SELECT** button on the remote. After adjustment has been made wait 6 seconds and the pop-up menu will disappear.



## Technical Specifications

- 7" TFT-LCD color monitor
- Audio output: 1 watt
- Rear speaker
- Power supply: automobile storage battery (8-16VDC)
- Power consumption: about 10 watts
- Outer dimension:
  - Without Flush Mount  
181mm (W) x 121mm (H) x 28mm (D)
  - With Flush Mount  
205mm (W) x 146mm (H) x 28mm (D)
- Dot pitch: 0.321 (W) x 0.372 (H)
- Resolution: 480 x 3 (RGB) x 234
- Contrast: 250:1
- Brightness: 450cd/m<sup>2</sup>
- Viewing angle: U: 30 / D: 60, R/L: 60
- Operating temperature: -20 ~ +70° C, RH90%
- Storage temperature: -30 ~ +80° C, RH90%

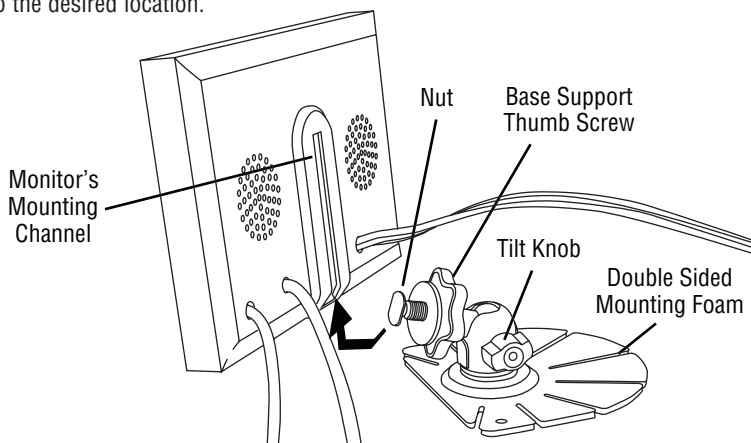
## Wiring Diagram



## Installation Instructions

### Pedestal Mounting the Monitor

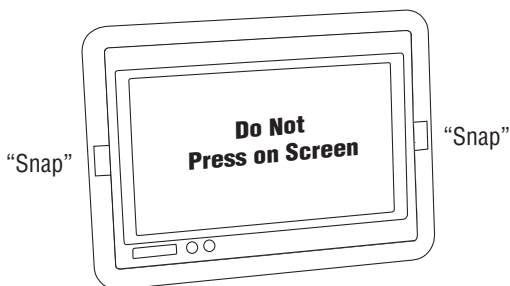
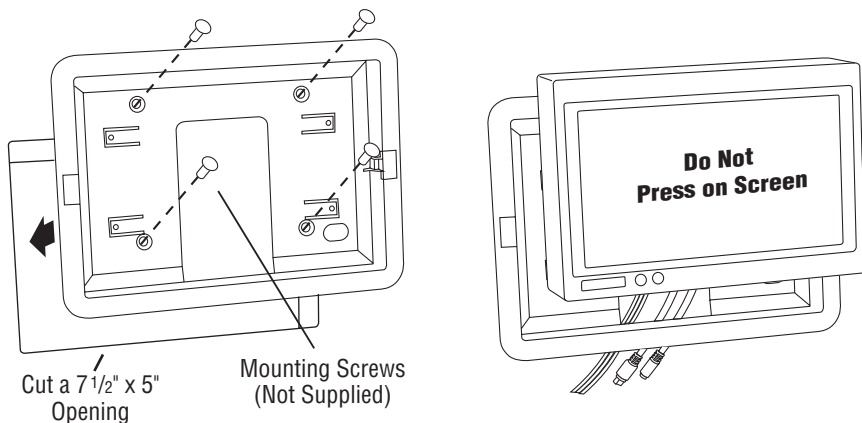
1. Loosen the thumb wheel on the base support so the nut attached to the thumb wheel can slide into the monitor's mounting channel.
2. Slide the thumb wheel nut into the channel on the back of the monitor.
3. Position the monitor to the desired height and tighten the base support thumb wheel.
4. Adjust the tilt knob.
5. Use the double-sided foam (supplied) or mounting screws (not supplied) to secure the base support to the desired location.



## Installation Instructions

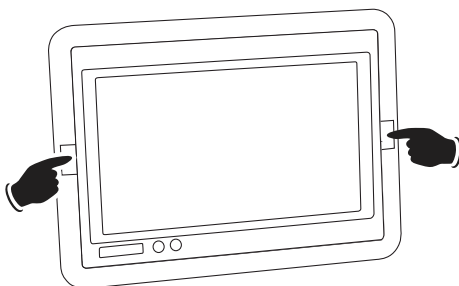
### Flush Mounting the Monitor

1. Locate a suitable location for mounting the monitor (In-Dash, In-Wall, Headrest, etc.). Then cut a 7-1/2" (W) x 5" (H) opening and insert and secure the flush-mount housing.
2. After securing the housing, insert the monitor into the housing. **Do Not Apply Pressure Directly to the LCD Monitor's Screen.** Utilize the outer edges to gently push the monitor into the housing until it snaps into place.



### Removing the Flush Mounted Monitor

1. Press the release buttons on the housing. The screen will be released from the mount.
2. Remove the monitor.



### **ONE (1) YEAR LIMITED WARRANTY**

**ANY PRODUCT THAT IS DEFECTIVE MUST BE RETURNED TO THE STORE FRONT (AUTHORIZED AGENT) WHERE THE PRODUCT WAS ORIGINALLY PURCHASED.**

Authorized agents of/or Magnadyne Corporation will within one year from the date of sale to you, repair, replace or refund the retail sales price of said product or any part thereof, at the option of the Magnadyne Corporation or its authorized agents, if said product or part is found defective in materials or workmanship, when properly connected and operating on the correct power requirements designated for the specific product. This warranty and Magnadyne Corporation or its authorized agent's obligations hereunder do not apply where the product was; damaged while in the possession of the consumer, subjected to unreasonable or unintended use, not reasonably maintained, utilized in commercial or industrial operations, or serviced by anyone other than Magnadyne Corporation or its authorized agents, or where the warning seal on the product is broken or the battery's watermark is damaged. Magnadyne Corporation or any of its authorized agents will not assume any labor costs for the removal and reinstallation of any product found to be defective, or the cost of transportation to Magnadyne Corporation or its authorized agents. Such cost are the sole responsibility of the purchaser.

This warranty does not cover the appearance items or accessories used in connection with this product, or any damage to recorded data, or any damage to the products resulting from improper installation, alteration, accident, misuse, abuse or acts of nature.

MAGNADYNE CORPORATION OR ITS AUTHORIZED AGENTS SHALL NOT BE LIABLE TO ANYONE FOR CONSEQUENTIAL OR INCIDENTAL DAMAGES OR CLAIMS EXCEPT THOSE ACCORDED BY LAW. NO EXPRESSED WARRANTY OR IMPLIED WARRANTY IS GIVEN EXCEPT THOSE SET FORTH HEREIN. NO IMPLIED WARRANTY SHALL EXTEND BEYOND ONE YEAR FROM THE DATE OF SALE.

This warranty extends only to the original purchaser of the product and is not transferable. Some states do not allow limitations on how long an implied warranty lasts, and some states do not allow the exclusion or limitation of incidental or consequential damages, so the above limitations or exclusion may not apply to you. This warranty gives you specific legal rights, and you may have other rights that vary from state to state.